

Don Jones Memorial

Proposal- Option A



• Ross Recreation Equipment Company, Inc. •

• 100 Brush Creek Road #206, Santa Rosa, CA 95404 • (707) 538.3800 • CCB #520752 •

www.rossrec.com

Project Summary

We at Ross Recreation and Landscape Structures greatly appreciate the opportunity to participate in the community engagement and design process for this new Don Jones Memorial playground project. During the past couple of years, maybe more than ever before, we have all gained a true understanding of the importance of having fun, challenging, accessible, and inclusive outdoor spaces for families to gather and engage with others.

A great deal of thought and consideration has been put into this project by our entire team to try to create a playground design that will meet the needs and desires of the Central Point community. On the following page, you'll find a design analysis from our inclusive play consultant Jill Moore who shares her detailed perspective on the play equipment design. We thought over every little detail for this project because we recognize the important role this park plays within the community and your desire for it to become a destination for users of ALL abilities.

This Landscape Structures design provides true opportunity and access for all users and guardians through multiple "no-transfer required" events in addition to challenge events and user available transfer elements. Please help us to change the narrative about inclusive play with the selection of the Landscape Structures design and allow us the opportunity to provide a unique community playground experience for everyone.

A change to a more inclusive, accessible, welcoming, and exciting new play space for users of ALL abilities impacts a community at so many levels and in ways often overlooked. Play shapes who we become as people and as a society and this design by Landscape Structures is the new shape of true, inclusive play and a



Len Fransen

Mobile: [503.407.4890](tel:503.407.4890)

Email: lenf@rossrec.com

Inclusive Design Summary

Intentional inclusive design is all about providing a play environment where every child is able to find their “just right” fit at any and all ability levels. It’s a space of variety, choice, challenge, risk, and opportunity - all rich in sensory play that encourages kids to play and problem-solve together. We also understand that inclusion looks different in every community, and the Don Jones memorial Park Playground is (and should be) a product of the voices of the users. Part of the intent in this design was to acknowledge that the ability needs for every playground-user are ever-changing and to put together a design that offers a wide variety of engagement however a user is moving that day with a variety of activities that provide motion and thrill, without the need for transfer.

This includes spinning, swinging, swaying, music activities, reach panels, storefronts - plenty of ways to play equitably regardless of how we move. That being said, we also wanted to provide an opportunity for the children who are able or who choose to transfer a way to build motor coordination skills; we have done this by utilizing the spiraled belting in the Super Netplex tower in design option #1 to get to the top and experience the reward of the 12’ tall slide when they get there.

Throughout the design, there are plenty of opportunities to engage in social play and practice our coordination skills, but there are also respite areas for when a child with autism, sensory processing disorder, or anxiety starts to feel overwhelmed. In addition, here are a few other things about this design that I love as a playground planner and as a playground user.

Variety of choice: This design offers a wide variety of choices for users of all abilities, but in particular for users who can’t or choose not to transfer. We know that some kids can’t transfer, some kids are just freakin’ tired and sometimes some kids just aren’t in the mood to. Elements like the We-Go-Round, We-Go-Swing, and Sway Fun offer amazing opportunities for engaging play even if we can’t or don’t want to transfer - there are options! If we can transfer - there’s a challenging belted tower (but equitable) route in design #1 with a reward at the end.



Jill Moore

INCLUSIVE PLAY SPECIALIST FOR LANDSCAPE STRUCTURES
FORMER PARALYMPIAN FOR TEAM USA

Mobile: 763-972-5460 Email: jillmoore@playlsi.com

The Facts of the Matter

People with disabilities are the nation's largest minority group, and the only one that anyone can join at any time.

6.7
MILLION

The number of school-age children with disabilities.

- U.S. Department of Education, 2019

1 BILLION+

The number of people with disabilities in the world. Nearly 15% of the world's population.

- World Health Organization, 2018

1 IN 700

babies are born with Down syndrome every year.

1 IN 323

children have cerebral palsy.

- Centers for Disease Control and Prevention, 2018

NEARLY 26%

of Americans have a disability and the prevalence of disabilities in adults increases with age.

- Centers for Disease Control and Prevention and Disability & Health Data System, 2019

74%

of parents believe it's important for their children to play with a variety of kids, including those with disabilities.

- Landscape Structures Inclusive Play Survey, 2014

ARTICLE 31

Children have the right to relax and play, and to join in a wide range of cultural, artistic and other recreational activities.

- The United Nations Convention on the Rights of the Child, 1989

1 IN 59

children have Autism Spectrum Disorder

- Centers for Disease Control and Prevention, 2018

15% A YEAR

Autism's rate of growth, making it the fastest growing disability

- Centers for Disease Control and Prevention, 2014

7 OUT OF 10

parents strongly agree that playground equipment should be designed so all children can play together.

- Landscape Structures Inclusive Play Survey, 2014

85%+

The number of adults with disabilities who report losing their jobs report doing so due to a lack of social skills.

- Elksnin & Elksnin, "Adolescents with Disabilities: The Need for Occupational Social Skills Training"; Exceptionality; Volume 9 No. 1 & 2; Pages 91-105.

500,000+

troops have been wounded in recent conflicts.

- Wounded Warrior Project

5% to 16%

of children are affected with Sensory Processing Disorder.

- "Sensational Kids: Hope & Help for Children with Sensory Processing Disorder," Lucy Jane Miller, Ph.D., 2006

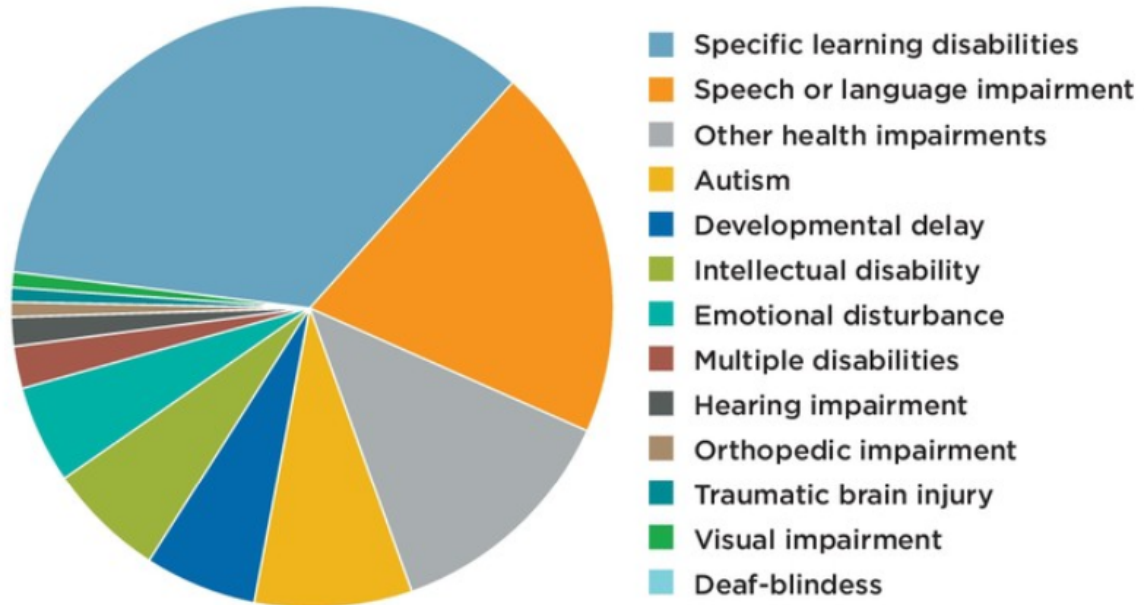


Accessibility VS. Inclusivity

Many parents mistakenly believe that playgrounds are required by the ADA to include elements for children with disabilities, however, current ADA standards only require accessibility for wheelchairs and other mobility aids. The focus should be on designing playgrounds that are truly inclusive.

Students with Disabilities

There are many types of disabilities
The **1%**
(Orthopedic Impairments)
that falls into the ADA target



Source: National Center for Education Statistics, 2019.



3D Rendering

View 1





3D Rendering

View 2



lsr
landscape
structures

Don Jones Memorial Park

1187051-01-01-02 • 06.14.2024

ROSS
Recreation Equipment

©2024 Landscape Structures. All Rights Reserved.

HIGHLIGHTING THE
Inclusive Elements

The We-saw™ is a new take on our traditional seesaw. Its unique design and gentle rocking motion invites kids and families of all ages and abilities to participate in the fun.



The We-Go-Swing® is a revolutionary step forward in inclusive play experiences. Designed to be integrated into the playground setting, this swing lets kids of all abilities play together and experience the thrill of swinging.

The Cozy Dome® offers kids a place to escape the hustle and bustle of a busy playground, take time by themselves or socialize together.

3D Rendering

View 3



lsr
landscape
structures

Don Jones Memorial Park

1187051-01-01-03 • 06.14.2024

R•SS
Recreation Equipment

©2024 Landscape Structures. All Rights Reserved.



3D Rendering

View 4





3D Rendering

View 5



LS
landscape
structures

Don Jones Memorial Park

ROSS
Recreation Equipment

1187051-01-01-05 • 06.14.2024

©2024 Landscape Structures. All Rights Reserved.

HIGHLIGHTING THE
Inclusive Elements



The Sway Fun® Glider is the first wheelchair-accessible glider that meets all safety standards. A great choice for totally inclusive playground fun.

The PlayBooster® Tunnel Slide gives the extra thrill of **sliding through a tunnel**.

This merry-go-round allows kids and families to interact and play together – including those in wheelchairs.

3D Rendering

View 6



landscape
structures

Don Jones Memorial Park

ROSS
Recreation Equipment

1187051-01-01-06 • 06.14.2024

©2024 Landscape Structures. All Rights Reserved.



3D Rendering

View 7



lsr
landscape
structures

Don Jones Memorial Park

1187051-01-01-07 • 06.14.2024

ROSS
Recreation Equipment

©2024 Landscape Structures. All Rights Reserved.

HIGHLIGHTING THE
Main Structure



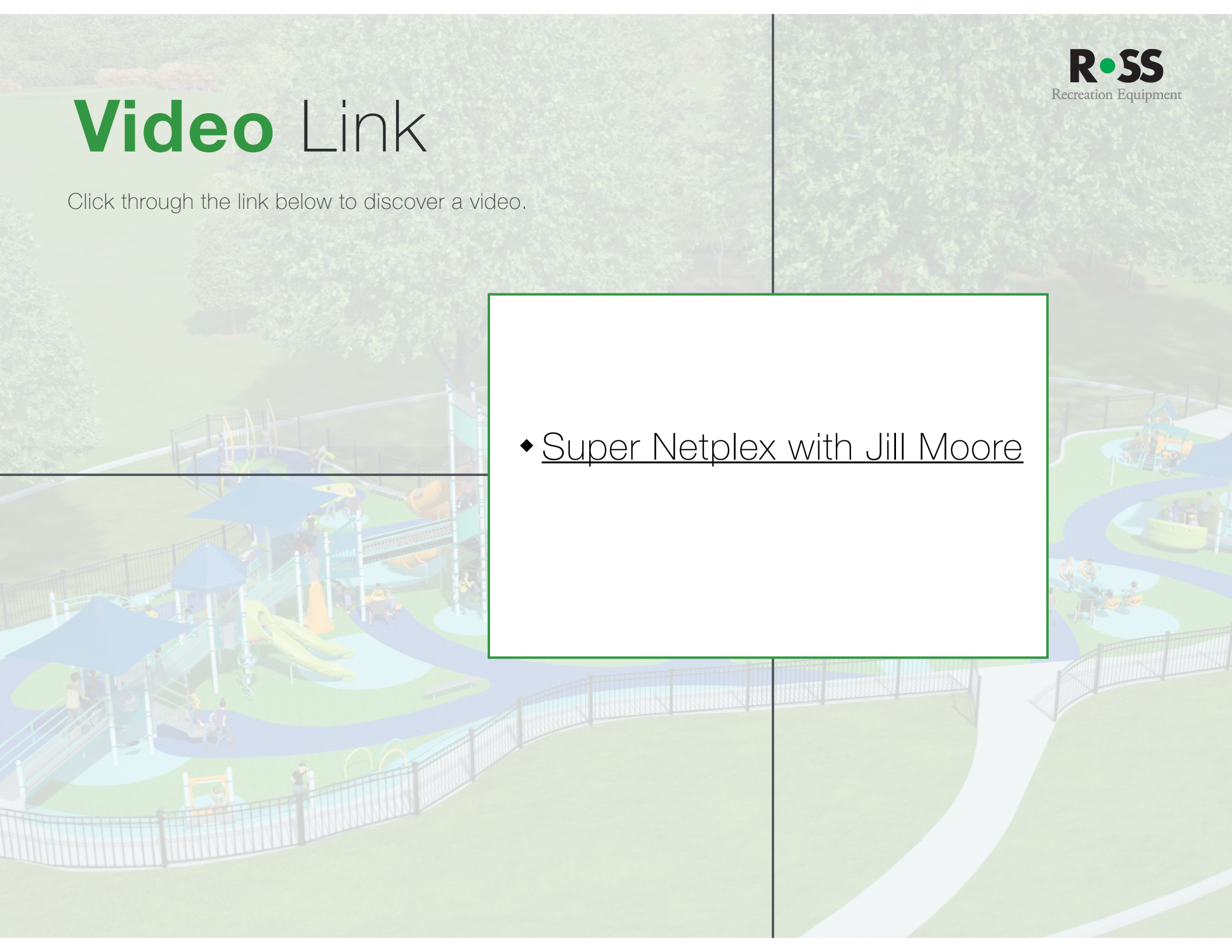
Rollerslide brings a cool, sensory experience to the playground, and an inclusive play experience to kids of all abilities.

The belt climber offers a tunnel experience connecting the tower to the rest of the structure!

Video Link

Click through the link below to discover a video.

◆ [Super Netplex with Jill Moore](#)



3D Rendering

View 8



lsr
landscape
structures

Don Jones Memorial Park

R•SS
Recreation Equipment

1187051-01-01-08 • 06.14.2024

©2024 Landscape Structures. All Rights Reserved.



3D Rendering

View 9



lsr
landscape
structures

Don Jones Memorial Park

R•SS
Recreation Equipment

1187051-01-01-09 • 06.14.2024

©2024 Landscape Structures. All Rights Reserved.

3D Rendering

View 10



lsr
landscape
structures

Don Jones Memorial Park

ROSS
Recreation Equipment

1187051-01-01-10 • 06.14.2024

©2024 Landscape Structures. All Rights Reserved.



3D Rendering

View 11



HIGHLIGHTING THE
Shade



Shade is integrated in the structure and independent features to provide protection and a more comfortable play experience.

Shade covers the entire swing set provide critical protection, blocking up to 97 percent of the sun's UV rays while making temperatures underneath the shade up to 30 degrees cooler.

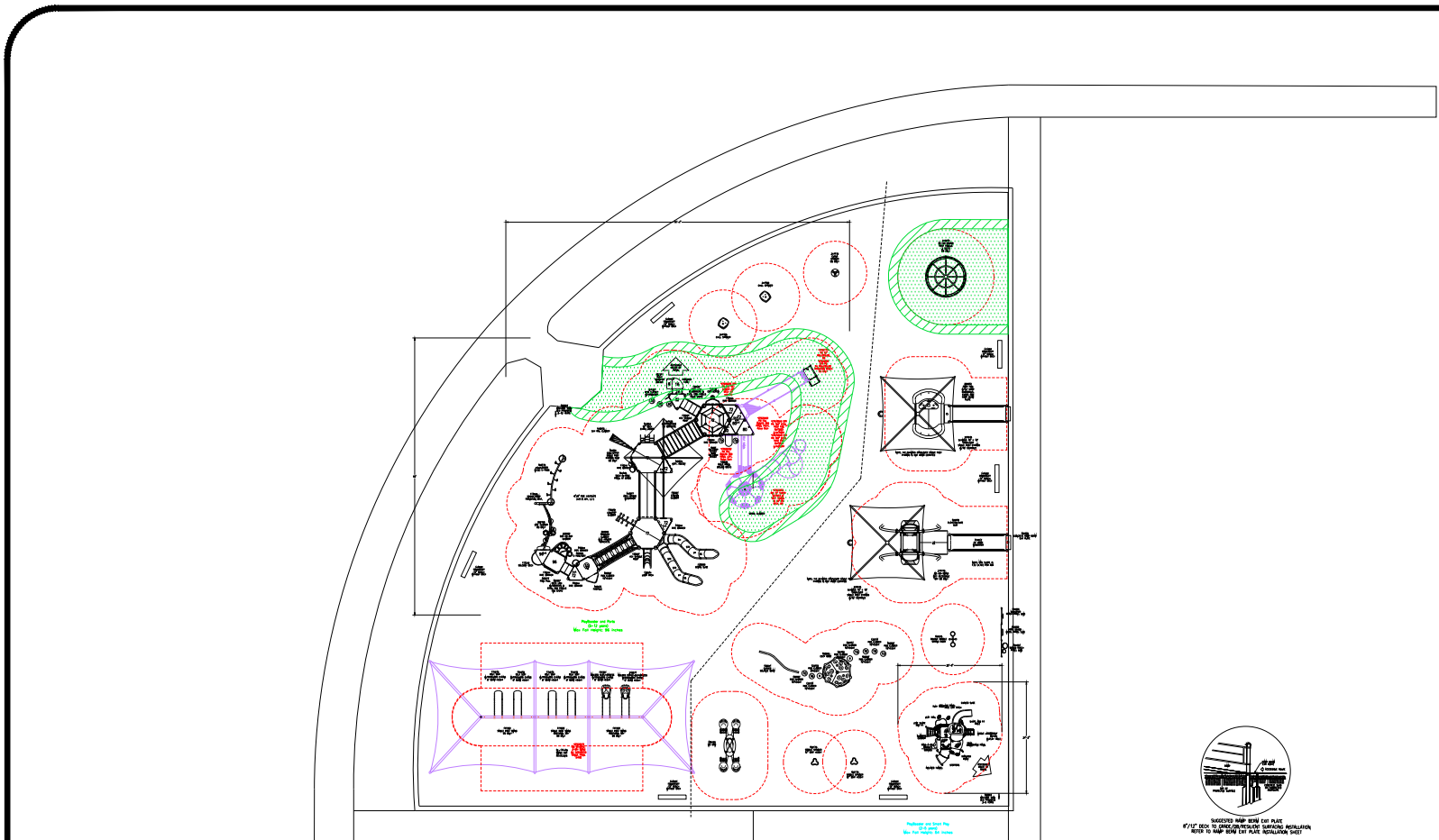
Video Links

Click through the links below to discover video footage of the playground

- ◆ [3D Flyover Design Video](#)



Drawing Plan



The play components identified on this plan are ASTM certified. (Unless model number is preceded with *) The use and layout of these components conform to the requirements of ASTM F1487. To verify product certification, visit www.astm.org

THIS PLAY AREA & PLAY EQUIPMENT IS DESIGNED FOR AGES 5-12 YEARS UNLESS OTHERWISE NOTED ON PLAN.

IT IS THE MANUFACTURER'S OPINION THAT THIS PLAY AREA DOES CONFORM TO THE A.D.A. ACCESSIBILITY STANDARDS, ASSUMING AN ACCESSIBLE PROTECTIVE SURFACING IS PROVIDED, AS INDICATED, OR WITHIN THE ENTIRE USE ZONE.

THIS CONCEPTUAL PLAN WAS BASED ON INFORMATION AVAILABLE TO US. PRIOR TO CONSTRUCTION, DETAILED SITE INFORMATION INCLUDING SITE DIMENSIONS, TOPOGRAPHY, EXISTING UTILITIES, SOIL CONDITIONS, AND DRAINAGE SOLUTIONS SHOULD BE OBTAINED, EVALUATED, & UTILIZED IN THE FINAL DESIGN. PLEASE VERIFY ALL DIMENSIONS OF PLAY AREA, SIZE, ORIENTATION, AND LOCATION OF ALL EXISTING UTILITIES, EQUIPMENT, AND SITE FURNISHINGS PRIOR TO ORDERING. SLITS SHOULD NOT FACE THE HOT AFTERNOON SUN.

CHOOSE A PROTECTIVE SURFACING MATERIAL THAT HAS A CRITICAL HEIGHT VALUE TO MEET THE MAXIMUM FALL HEIGHT FOR THE EQUIPMENT (REF. ASTM F1487 STANDARD CONSUMER SAFETY PERFORMANCE SPECIFICATION FOR PLAYGROUND EQUIPMENT FOR PUBLIC USE, SECTION 8, CURRENT REVISION). THE SURFSURFACE MUST BE WELL DRAINED IF THE SOIL DOES NOT DRAIN NATURALLY. IT MUST BE TILED OR SLOPED 1/8" TO 1/4" PER FOOT TO A STORM SEWER OR A "TRENCH DRAIN".

ACCESSIBLE/PROTECTIVE SURFACING TO BE A COMBINATION OF UNITARY AND LOOSE FILL MATERIALS.

IT IS THE MANUFACTURER'S OPINION AND INTENT THAT THE LAYOUT OF THESE COMPONENTS CONFORM WITH THE U.S. CONSUMER PRODUCT SAFETY COMMISSION'S (CPSC) "HANDBOOK FOR PUBLIC PLAYGROUND SAFETY".

DESIGNED BY:

DTG

COPYRIGHT: 6/13/24
LANDSCAPE STRUCTURES INC.
601 7th STREET SOUTH
DELAND, MINNESOTA 55328
P.O. BOX 4074
playkit.com

Date	Previous Drawing #	Initials



WARRANTY MAP SHOWS EXISTING UTILITIES. REFER TO MAP SHOWS EXISTING UTILITIES. REFER TO MAP SHOWS EXISTING UTILITIES.

5-12 EQUIPMENT

TOTAL ELEVATED PLAY COMPONENTS	19		
TOTAL ELEVATED COMPONENTS ACCESSIBLE BY RAMP	0	REQUIRED	0
TOTAL ELEVATED COMPONENTS ACCESSIBLE BY TRANSFER	15	REQUIRED	10
TOTAL ACCESSIBLE GROUND LEVEL COMPONENTS SHOWN	13	REQUIRED	6
TOTAL DIFFERENT TYPES OF GROUND LEVEL COMPONENTS	5	REQUIRED	5

2-5 EQUIPMENT

TOTAL ELEVATED PLAY COMPONENTS	10		
TOTAL ELEVATED COMPONENTS ACCESSIBLE BY RAMP	0	REQUIRED	0
TOTAL ELEVATED COMPONENTS ACCESSIBLE BY TRANSFER	9	REQUIRED	5
TOTAL ACCESSIBLE GROUND LEVEL COMPONENTS SHOWN	17	REQUIRED	3
TOTAL DIFFERENT TYPES OF GROUND LEVEL COMPONENTS	13	REQUIRED	13



Don Jones Memorial Park
Cetral Point, OR

Ross Recreation
Equipment Co.
Len Fransen

SYSTEM TYPE:
PlayBooster
DRAWING #:
1187051-01-01

